

SKIN CARE SOLUTIONS

Bioelements Customized Facial 75-100

Personalized facial, each step is a fusion of science, natural botanicals, aromatherapist oils and luxurious techniques customized with clinical strength ingredients uniquely designed to deliver results. Begins with an individualized SkinReading® to determine your concerns and goals, followed by invigorating cleansing, exfoliation and skin sedation, a custom blended aromatherapeutic facial massage, plus a power treatment and mask targeted to your concerns. (treatment time: 30, 60 min)

Calming Facial 75-100

Designed for skin that's stressed, red or delicate. Clean, clinical ingredients triple-target sensitivities, as active strengtheners nourish skin's barrier - all enveloped within soothing massage techniques. The ultimate corrective facial for chronic sensitivities. (treatment time: 60 min)

Depigmenting & Brightening Facial 75-100

High-tech facial to even out skin tone and fade dark spots. Begins with a thorough skin cleansing followed by an exfoliation treatment custom blended just for you. Next, a clinical-strength LightPlex GigaWatt Dark Spot Corrector is penetrated deep into skin where dark spots are formed. To finish, you'll experience an activated charcoal mask to penetrate the active ingredients. It's the perfect treatment to help you attain even-toned, brighter skin. (treatment time: 60 min)

Firm & Lift Facial 75-100

A one-of-a-kind treatment designed to lift and sculpt the look of ageing skin. A consultation will evaluate your most urgent concerns, followed by deep cleansing and exfoliation to prepare your skin for clinical ingredients. We'll intensify the treatment with an application of our powerfully active Bioelements Firmamint mask, designed to lift, tighten and firm the feel of skin. You'll see and feel the renewing benefits immediately. (treatment time: 60 min)

Bioelements Teen Facial 75-100

Take your mind off the daily pressures of school. This facial is designed specifically for teen skin - to target stress-related breakouts, dark circles, and dullness. We'll help reset your skin with consciously clean, cruelty-free formulas. You'll experience a deep cleansing and exfoliation followed by aromatherapy massage - plus, we'll gently extract unwanted blemishes. You'll see how the right formulas can help you embrace your natural skin and see long term, healthy results. (treatment time: 60 min)

X08 Cosmeceutical Stem Cell Mask 120-185

This sheet mask delivers what you are looking for, 24 Nano Gold, growth factors, CoQ10, hydraulic acid, vitamins A&E and a host of other goodies plump, hydrate, smooth and brighten your skin. This is the facial you want for that special event be it a wedding, anniversary, or graduation. Done up to a week prior this facial will prime your skin to look its very best for a natural look or with makeup application. (treatment time: 90 min)



REDKEN



PAUL MITCHELL
PROFESSIONAL SALON PRODUCTS

O·P·I


bioelements



EMERA
CBD HAIRCARE

bodyography®
PROFESSIONAL COSMETICS

AND MORE...

 VISIT US ON FACEBOOK

GIFT CARDS AVAILABLE

All of our salon and spa services are 100% guaranteed. If for any reason you are displeased with the service you've received, we encourage you to let us know. We would like to have the opportunity to make things right for you. Should a cancellation or date change be necessary, we request a minimum of 24 hours notice. We reserve the right to bill for any missed services.

HAIR CARE | CHEMICAL SERVICES | NAIL SERVICES

Clipper's
Mate
SALON



since 1973

920.743.4492

7 South Madison Avenue
Sturgeon Bay, WI 54235

WWW.CLIPPERSMATE.COM



HAIR

Women's Haircut & Style	37-65
Women's Dry Cut	31-59
Men's Haircut	22-50
Kid's Haircut (10 and under)	19-47
Bang Trim	15 <i>and up</i>
Beard Trim	15 <i>and up</i>
Braid	15 <i>and up</i>
Shampoo Style	24-60 <i>and up</i>
Party Style	80-90 <i>and up</i>
Bridal Parties	Special Pricing
Hair Extensions	Requires Consultation

COLOR

Re-growth Color	41-69
All Over Color	49-77
Partial Foil	65-93
Full Foil	75-103
Signature Foil	7-10 / <i>Foil</i>
Brow Tint	12-25
Corrective Color	Requires Consultation
Men's Camo Color	41-69
Men's Permanent Color	49-77

TREATMENTS

Customized Conditioning Treatment	17-20
Keratin Treatment	27-30
Malibu Treatment	30-35
Hair Mask	7-15
Scalp Treatment	47-50
pH Bonder	22-25
Olaplex	22 <i>and up</i>

TEXTURE

Full Perm	82-110
Partial Perm	72-110
Spiral/Specialty Perm	140-200
Smoothing System	150 <i>and up</i>

SKIN

Brow Wax	16-20
Lip Wax	16-20
Combination Lip & Brow	27-35
Brow Lamination	70-110
Make-up Application	60-70
Trial Make-up Application	50-60
Eye Lash Application	3/ <i>lash</i>
Airbrush Make-up Application	95-105
Ear Pierce (4 and up)	<i>Includes Earrings</i> 30-40

NAILS

Basic Manicure	33-55
Spa Manicure	38-60
French Polish	7-10
Nail Art	15 <i>and up</i>
Paraffin Treatment	14-20
Polish Change	20-30
Shellac Polish	38-60
Shellac Polish with Manicure	48-70
Dip & Buff	42-64
Artificial Nails - Base Fill	36-58
Artificial Nails - Full Set	72-93
Express Pedicure	39-61
Spa Pedicure	53-75
Foot Mask with Pedicure	7-10
Shellac Polish with Pedicure	17-20

LASHES

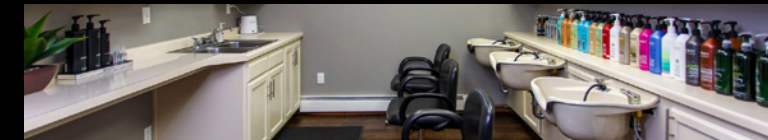
Full Set Lash Extensions	225-305
Fill In Lash Extensions	75-155
Lash Lift	70-110
Lash Tint	25-55
Lash Plump	25-55
Lash Tint/Brow Tint Combo	40-100

BODY WAXING

Full Back	46-68
Full Arm	39-61
Full Leg	74-96
Full Leg with Bikini	91-113
Half Leg	46-68
Under Arm	26-48
Bikini	31-53

STRAIGHT RAZOR SHAVING

Straight Razor Hairline	14-36
Straight Razor Full Face	34-56
Combo Hairline & Full Face	49-71
Line Beard	14-36
Combo Line Beard & Hairline	29-51



SKIN CARE SOLUTIONS

Dermaplaning	20-80
Dermaplaning is a technique when a precision instrument is guided across your skin with feather-like strokes softly removing dead surface cells and as an added benefit the removal of facial vellus hair leaving your skin feeling refreshed, alive and glowing.	

Rezenerate	100-180
Living at the intersection of beauty and science the Rezenerate skin conditioning system uses nanotechnology that assists in the delivery of serums and products providing a light exfoliation, plumping and improved skin tone.	

Microcurrent	110-190
Microcurrent is a low level current that mirrors the body's own natural current. A very comfortable sub-sensory treatment that results in improved skin texture. A non-invasive modality that re-educates the facial muscles, toning, tightening, and lifting the whole facial area giving a lifted appearance. Perfect for that "big" event coming up. Can be done as a single treatment or in a series depending on what is discussed between you and your skin care expert.	

Electrolysis	30-90
--------------	-------

**Prices subject to change according to hair length, texture and designer.*